

UNRESERVED PUBLIC AUCTION

GM AUCTION



2004 VOLVO EC55



1994 JOHN DEERE 544G
WHEEL LOADER



2002 PETERBILT 379 T/A TRACTOR



KENWORTH T800, w/UNUSED SMITH
4,000-GAL. TANK



2005 VOLVO L45 WHEEL LOADER

Retirement Auction for Fouch Equipment, Inc.
(After 55 Years in One Location)

PLUS

Our Annual Spring Truck & Heavy Equipment Sale

Longview, Washington

Sale Site Location: Fouch Equipment, Inc.
758 California Way

Tuesday, March 25 & Wednesday, March 26, 2008 • 9:00 A.M. Each Day



(3) 2004 FREIGHTLINER FLD112SD DUMP TRUCKS



2002 PRENTICE 620 FELLER BUNCHER



GARRY MONTAGUE

Auctioneers

See our Website at gmauctioneers.com
WA Lic. No. GARRYMA03189

Portland, Oregon
(503) 251-8660

Spokane, Washington
(509) 536-7538

Seattle, Washington
(206) 849-8613

**Complete
Dispersal
for Fouch
Equipment, Inc.
Plus Equipment
From:**

- Volvo Rents
- Emory & Sons Construction Co.
- Shawn Montee Timber Co.
- Monk Logging
- Coast Crane
- City of Portland
- City of Vancouver
- Clark County Public Works
- Cowlitz County PUD
- Randco Equipment
- Smith Equipment & Welding
- And Others



GARRY MONTAGUE
Auctioneers

See our Website at gmauctioneers.com

WA Lic. No. GARRYMA03189

Retirement Auction for Fouch Equipment, Inc.
(After 55 Years in One Location)

PLUS

Our Annual Spring Truck & Heavy Equipment Sale

Longview, Washington

Sale Site Location: Fouch Equipment, Inc., 758 California Way

Tuesday, March 25 & Wednesday, March 26, 2008 • 9:00 A.M. Each Day

INSPECTION

Daily beginning Saturday, March 22, 2008, 8:00 A.M. to 4:00 P.M.

TERMS OF SALE

All payments must be made by cash or certified funds. Personal or company checks must be accompanied by an irrevocable bank letter of guarantee. Non U.S. citizens will be required to wire transfer funds directly to Garry Montague Auctioneers. Payment in full must be arranged for on sale day. Auctioneers reserve the right to refuse issuing a bidding card. Auctioneers make no guarantees or warranties, expressed or implied, of any kind. **This brochure and the sale day catalog are only a guide; please inspect equipment prior to bidding.**

ABSENTEE BID

Unable to attend but wish to bid on one or more pieces of equipment in the auction? Contact our Spokane office or the sale site to place an absentee bid (must be \$5,000 or more). Absentee bids must be placed a minimum of 24 hours in advance of sale and require a 25% deposit in advance by certified funds. Please allow the sale staff ample notice.

DIRECTIONS TO SALE SITE

From I-5, take Exit 36 and proceed west on Highway 432 for approximately 2.3 miles to the 4th Street Exit. Exit and turn left on 4th Street for approximately 1/2 mile to California Way. Turn right and go west on California Way about 1/2 mile to sale site at Fouch Equipment, Inc., 758 California Way.

**SALE SITE
TELEPHONES**

(360) 423-2870
Fax (360) 423-3495

FUTURE AUCTIONS

Post Falls, Idaho.....April 22, 2008
Salem, OregonJune 2008

AIRLINES

Portland, Oregon is located 36 miles south of Longview and is served by most major airlines.

Kelso, Washington is approximately 3 miles from auction site and has a municipal airport.

CAR RENTALS

Portland, Oregon and Vancouver, Washington are served by most major car rental companies.

FINANCING

Wells Fargo Corp.	(360) 687-1925
Financial Federal Credit	(206) 605-8306
Dolsen Leasing	(888) 476-2200
Intermountain Leasing	(509) 924-0280
FCC Equipment Leasing	(800) 207-9286

MOTELS

Quality Inn	(360) 414-1000
Red Lion Inn	(360) 636-4600
Travelodge	(360) 423-6460
Comfort Inn	(360) 425-4600

NOTICE TO BUYERS A handling fee of 10% will be charged on all lots selling for \$2,500.00 or less.



1994 CAT IT28F TOOL CARRIER



(1 OF 2) 1996 CASE 9010 EXCAVATORS



2005 VOLVO ECR38



1996 CASE 580L 4x4 BACKHOE



JOHN DEERE 690 EXCAVATOR



CASE 580K BACKHOE



KOMATSU D65E CRAWLER TRACTOR



FORD 555A BACKHOE

FELLER BUNCHER

2002 PRENTICE 620FB, s/n P56884, Cummins 8.3L eng. (260 hp.), C/W Quadco 22" hot saw, cab, w/heat and AC, (recent new right rear final drive).

WHEEL LOADERS

2005 VOLVO L45, Q/A bucket, EROPS, 17.5R25 tires, (1,260 hrs.)

1994 JOHN DEERE 544G, s/n 549258, GP bucket, EROPS, 20.5x25 tires.

1994 CAT IT28F, s/n 3CL00494, Q/A bucket and forks, EROPS, 20.5x25 tires.

HYDRAULIC EXCAVATORS

(2) 1996 CASE 9010, s/ DAC0101132, DAC0101256, GP bucket w/thumb, cab.

1993 JOHN DEERE 790E-LC, s/n L010282, GP bucket, cab.

JOHN DEERE 690C, s/n A510943, GP bucket, cab.

MINI-EXCAVATORS

2005 VOLVO ECR38, GP bucket w/ thumb, rubber tracks, dozer blade, OROPS, (150 hrs.)

2005 VOLVO EC35, GP bucket w/ thumb, rubber tracks, dozer blade, OROPS, (675 hrs.)

2004 VOLVO EC55, GP bucket w/ thumb, rubber tracks, dozer blade, cab, (2,066 hrs.)

2004 CASE EX20, GP bucket, dozer blade, rubber tracks, OROPS (360 hrs.)

2005 VOLVO ECR58, GP bucket w/ thumb, dozer blade, rubber tracks, OROPS.

2005 VOLVO ECR88, GP bucket w/ thumb, extended reach stick, dozer blade, rubber tracks, cab, (1,070 hrs.)

CRAWLER TRACTOR

KOMATSU D65E, s/n 325893, angle dozer, OROPS.

LOADER BACKHOES

1996 CASE 580L 4x4 Extendahoe, w/thumb, 4-in-1 front bucket, cab.

1997 FORD 575 4x4 Extendahoe, GP bucket, cab.

1990 CASE 580K Extendahoe, GP bucket, cab.

FORD 555A Extendahoe, GP bucket, cab.



1998 GRADALL 534C9 9,000-LB. 4x4 REACH FORKLIFT



GROVE MZ116C 4x4 110' BOOM LIFT



IDAHO RLA 4x4 SNOWBLOWER



1999 KENWORTH W900B T/A DUMP TRUCK



2004 VOLVO MC110 SKID STEER



< CAT CP553 84" PAD FOOT ROLLER



> CAT CS553 84" SMOOTH DRUM ROLLER



JOHN DEERE 2355 4x4 TRACTOR



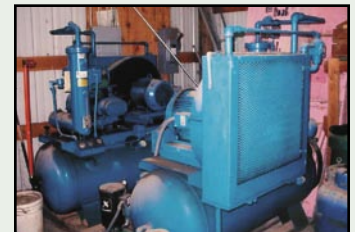
JOHN DEERE 970 TRACTOR, w/FRONT LOADER



1997 GROVE AMZ39NE ARTICULATING BOOM LIFT



(1 OF 2) GEHL DL8H REACH FORKLIFT



(2) QUINCY 15 HP. SHOP COMPRESSORS



(1 OF 2) MANITOU 8,000-LB. 4x4 REACH FORKLIFTS



FORD F-650 6-YARD DUMP TRUCK



1999 GEHL DL8H 8,000-Lb. Reach Forklift, 4x4x4, John Deere dsl., 42' 3-stage reach, hyd. leveling, cab, 13:00-24 tires.

2003 GEHL DL6H 6,000-Lb. Reach Forklift, 4x4x4, John Deere dsl., 42' 3-section boom, hyd. leveling, cab, 13:00-24 tires.

(2) 2000 MANITOU 8,000-Lb. Reach Forklifts, 3-section boom, 42' lift height, 4x4x4, Perkins dsl., OROPS, 15.5x25 foam filled tires.

1998 GRADALL 534C9 9,000-Lb. Reach Forklift, 4x4x4, 45' lift height, Cummins turbo dsl., OROPS, 1300x24 tires.

1997 LULL 8K42 8,000-Lb. Reach Forklift, 42' lift height, 4x4x4, Cummins 3.9L eng., OROPS, 1300x24 tires.

1997 LULL 6K37 6,000-Lb. Reach Forklift, 37' lift height, 4x4x4, Cummins 3.9L eng., OROPS, 1300x24 tires.

WIGGINS W86 6,000-Lb. Forklift, gas eng., 2-stage mast.

HYSTER H200 20,000-Lb. Perkins Dsl., canopy.

CAT 8,000-Lb. LPG, 3-stage mast, s/s, canopy.

NAMCO 2,000-Lb. Electric Warehouse Forklift, w/boom.

SKID STEER LOADER

2004 VOLVO MC110, Q/A bucket, aux. hyds., dsl. eng., OROPS, (405 hrs.)

COMPACTION

2005 SUPER PAC 8410, 84" smooth drum roller, Cummins eng., OROPS, drum drive, 23.1-26 tires (complete w/bolt-on pad foot kit, 1,201 hrs.)

CAT CP553, s/n 7BD00040, 84 pad foot drum, Cat 3208 eng., 23.1x26 tires, OROPS.

CAT CS553, s/n 7AD00391, 84 smooth drum, Cat 3208 eng., 23.1x26 tires, OROPS.

INGERSOLL-RAND DD23, s/n 50705, 39 tandem smooth drums, Deutz dsl.

UTILITY TRACTORS

2004 JOHN DEERE 4115, 4x4, 23 hp. dsl., front loader, canopy, 3-pt. hitch (backhoe attachment and rotary mower attachment for this unit to be sold separately.)

1992 JOHN DEERE 2355, 4x4, dsl., 3-pt. hitch.

(2) 1992 JOHN DEERE 2355 Front Loaders, 3-pt. hitch.

1992 JOHN DEERE 970, dsl. eng., front loader, 3-pt. hitch.

JOHN DEERE 950, dsl. eng., front loader, 3-pt. hitch, w/6' tiller.

SNOW REMOVAL EQUIPMENT

IDAHO NORLAND RLA 4x4, w/10' snow blower, 12V71 Detroit eng., Allison auto. transmission, Clark planetary.

FORKLIFTS

2000 GEHL DL8H 8,000-Lb. Reach Forklift, 4x4x4, John Deere dsl., 42' 3-stage reach, hyd. leveling, cab 13:00-24 tires.

GROUNDS MAINTENANCE

2001 TORO 4000D Ground Master Mower.

1999 TORO 580D Rotary Mower.

2000 CUSHMAN Turf Truckster 3-Wheel Scooter, w/dump bed.

JOHN DEERE 2653A 84 Riding Mower.

(2) TORO 72 Riding Mowers.

AERIAL EQUIPMENT

1994 GROVE MZ116C Boom Lift, 110' working height, 700-lb. cap., 4x4, Cummins 3.9L 110 hp. eng., 2,000-watt generator.

1996 GROVE MZ66CXT Boom Lift, 60' boom, 4x4, Ford dual fuel eng., 2,000-watt generator.

1998 GROVE MZ66BXT Boom Lift, 60' lift, 500-lb. cap., 4x4, Nissan eng., 2,000-watt generator.

(5) 2000 JLG 40H Boom Lifts, 40' platform height, 500-lb. cap., Ford dual fuel eng., generator.

(3) 1997 GROVE AMZ51E Articulating Boom Lifts, 51' platform height, electric.

1997 GROVE AMZ39NE Articulating Boom Lift, 33' platform height, 500-lb. cap., electric.

(6) 1997 GROVE AMZ46NE Articulating Boom Lift, 40' platform height, 500-lb. cap., electric.

AIR COMPRESSORS

2004 SULLAIR 185DPQJD, 185 cfm towable, John Deere 4-cyl. dsl.

(2) QUINCY 15 Hp. Shop Compressors, w/air drives.



KENWORTH T800 T/A, w/UNUSED RANDCO 4,000-GAL. TANK SYSTEM



1994 PETERBILT 320 T/A, w/4,000-GAL. WATER TANK SYSTEM



1992 WHITE-GMC T/A, w/UNUSED RANDCO 3,200-GAL. TANK



1997 GMC 7500, w/UNUSED RANDCO 2,500-GAL. TANK SYSTEM



IHC 2300 SA, w/UNUSED SMITH 2,300-GAL. TANK



2003 PETERBILT 379 T/A TRACTOR



1998 KENWORTH W900B TRACTOR



1990 GMC 7000 CATCH BASIN CLEANER



(1 OF 3) FORD F-450, w/35' BUCKET



(1 OF 2) 2001 FORD E-450 13-PASSENGER BUSES, w/WHEELCHAIR LIFT



CHEVROLET 3500 4x4 SERVICE TRUCK



FORD F-350, w/SNOWPLOW



1999 CHEVROLET 1500 SHORT BOX



FORD F-700 SERVICE TRUCK



2000 STERLING C8000, w/ELGIN WHIRLWIND SWEEPER



(1 OF 4) 2005 FORD F-350 4x4 CREW CABS



1999 FORD F-550 4x4, w/35' BUCKET

DUMP TRUCKS

(3) 2004 FREIGHTLINER FLD112SD T/A, Cat 6-cyl., 8LL trans., 20,000-lb. front axle, 46,000-lb. rear axles, Tuff-Track 46,000-lb. susp., P/S, 16' Pioneer steel box, w/high liftgate, elec. rollover tarp.

1999 KENWORTH W900B T/A, Cat 425 hp., 10-spd., 40,000-lb. rears, air ride susp., P/S, UNUSED 16' rock box, w/high liftgate, plumbed for pup.

1999 FORD F650 S/A, Cummins eng., A/T, 6-yd. box, P/S.

WATER TRUCKS

KENWORTH T800 T/A, Cat 3406B, 9-spd., 40,000-lb. rears, P/S, A/C, J/B, (UNUSED) Smith 4,000-gal. water system, (5) spray heads, street flusher, self-load capability, hose reel, gravity drop, (sold with salvage title).

PETERBILT 359 T/A, Cat 3406, 15-spd., 40,000-lb. rears, P/S, A/C, (UNUSED) Randco 4,500-gal. tank system, (5) spray heads, self-loading, Monarch 900 GPM.

1994 PETERBILT 320 T/A, dsl. eng., A/T, 4,000-gal. water tank, high-pressure pumps, street flusher, hose reel.

1992 WHITE-GMC T/A, Detroit 60 Series, 9-spd., 40,000-lb. rears, air ride, (UNUSED) Randco 3,200-gal. tank system, (5) spray heads, hose reel.

1997 GMC 7500 S/A, Cat 3116, A/T, A/C, 31,000 GVW, (UNUSED) Randco 2,500-gal. tank system, (5) spray heads, hose reel, self-loading capability.

1989 IHC 2300 S/A, DT466, 9-spd. (UNUSED) Smith 2,300-gal. tank system, PTO, (5) spray heads, street flusher.

TRUCK TRACTORS

2003 PETERBILT 379 T/A Day Cab, Cat 410 hp., 10-spd., 40,000-lb. rears, air ride susp., P/S, A/C.

2002 PETERBILT 379 T/A Day Cab, Cat 410 hp., 10-spd., 40,000-lb. rears, air ride susp., P/S, A/C.

1998 KENWORTH W900B T/A Day Cab, Cat 425 hp., 10-spd., 40,000-lb. rears, air ride, P/S, A/C.

MISCELLANEOUS TRUCKS

1990 GMC 7000 S/A, w/catch basin cleaner system, V8, 5&2-spd.

1991 FORD F-700, V8, 5&2-spd., 14' utility box, front mount winch.

SWEEPER

2000 STERLING C8000, w/Elgin Whirlwind street sweeper, Cummins 5.9L, A/T, dual gutter brooms, center broom, (ex municipal unit).

PICKUPS, 1-TONS

(2) 2005 FORD F-350 4x4 Crew Cab, w/8' utility body, Power Stroke dsl., A/T, A/C, P/S.

(2) 2005 FORD F-350 4x4 Crew Cab, w/8' steel flatbed, Power Stroke dsl., A/T, A/C, P/S.

2003 FORD F-150 Pickup, V-8, A/T, P/S, 8' pickup box.

1999 FORD F-550 4x4 Bucket Truck, PS dsl., A/T, 9' utility box, Altec 35' bucket.

1997 FORD F-450 Bucket Truck, PS dsl., A/T, 9' service box, Altec 35' bucket.

(2) 1996 FORD F-450 Bucket Trucks, PS dsl., A/T, 9' service box, Altec 35' bucket.

2001 and 2000 FORD E-450 13-Passenger Bus, PS dsl., A/T, A/C, fitted w/wheelchair lifts.

1999 FORD F-350, w/utility box, V8, A/T.

1998 CHEVROLET 3500 Service Truck, 4x4, V8, A/T.

1998 GMC 3500 Service Truck, V8, A/T.

1995 FORD F-350 4x4, w/9' flatbed, 7.3L dsl., 5-spd., C/W 8' snowplow.

1995 FORD F-350, w/service body, V8, 5-spd.

1994 FORD F-350 Pickup, V8, A/T.

1994 FORD F-450 Ambulance, V8, A/T.

(2) 1995 FORD F-350, w/utility box, V8, A/T.

1992 CHEVROLET Hi-Cube Van, 12' body, V8, A/T.

1999 CHEVROLET 1500 Short Box Pickup, V8, A/T.

1998 CHEVROLET S10 Extendacab Pickup, 6-cyl., A/T.

1999 FORD Ranger Extended Cab Pickup, V6, A/T.

(2) 1994 FORD F-250 Pickups, V8, A/T.

1993 CHEVROLET 2500 Pickup, V8, A/T.

1992 GMC 3500 4x4, w/utility body, V8, A/T.

1995 FORD F-250, w/8' utility box, V8, A/T.

(2) 1993 CHEVROLET 2500 4x4 Pickups, V8, A/T.

1998 CHEVROLET Astro Van, 6-cyl., A/T.

1991 CHEVROLET Astro Van, 6-cyl., A/T.

1996 CHEVROLET S10 Extendacab Pickup, 4-cyl., A/T.

1985 CHEVROLET 2500 Cargo Van, V8, A/T.

1984 CHEVROLET 2500 Cargo Van, V8, A/T.



2000 FORD EXPEDITION



(1 OF 11) 2005-2000 FORD CROWN VICTORIAS



TRANSPORT 6,000-GAL. T/A ASPHALT TRAILER



(1 OF 3) 5,000-GAL. RUBBER-LINED TANKERS

SPORT UTILITY VEHICLES

- 2000 FORD Expedition, 4x4, V8, A/T.
- 2000 FORD Explorer, 4x4, V8, A/T.
- 1999 GMC Yukon, 4x4, V8, A/T.
- 2004 CHEVROLET S10 Blazer, 4x4, V6, A/T.
- 1997 FORD Explorer, 4x4, V8, A/T.
- 1995 CHEVROLET Suburban, 4x4, V8, A/T.
- 1994 FORD Explorer, 4x4, V8, A/T.
- 1994 JEEP Cherokee, 4x4, 4.0L eng., A/T.

AUTOMOBILES

- 2005 FORD Crown Victoria, 4-door, V8, A/T.
- (6) 2003 FORD Crown Victorias, 4-door, V8, A/T.
- (2) 2000 FORD Crown Victorias, 4-door, V8, A/T.
- 1996 FORD Crown Victoria, 4-door, V8, A/T.
- 2001 FORD Crown Victoria, 4-door, V8, A/T.
- 2005 FORD Focus, 4-door, 4-cyl., A/T.
- 1994 CHEVROLET Corsica, 4-cyl., A/T.
- 1986 FORD Aerostar Van, 6-cyl., A/T.

TANK TRAILERS

- TRANSPORT 6,000-Lb. Gal. T/A Asphalt Trailer.
- FRUEHAUF 5,050-Gal. T/A Trailer, rubber-lined, Code MC312.
- FRUEHAUF 5,281-Gal. T/A Rubber-Lined Trailer, Code MC312.
- HEIL 5,072-Gal. T/A Rubber-Lined Tank Trailer, Code MC312.

EQUIPMENT UTILITY TRAILERS

- 1999 DYNAWELD 45' Step Deck Hyd. Beavertail Equipment Trailer, w/winch.
- 2005 LOAD TRAIL 14,000-Lb. Equipment Trailer, tilt deck, pintle hitch.
- 1998 GALPIN T/A Tilt Deck Equipment Trailer, pintle hitch.
- 1996 PJTR 20' Flatbed Utility Trailer, hitch type.
- 1992 INTERSTATE 24DTA Equipment Trailer, T/A, beavertail, w/ramps, A/B, pintle hitch.
- KUSTOM-BILT Tri-Axle Tilt Deck Equipment Trailer, pintle hitch.
- KUSTOM-BILT S/A Enclosed Tool Trailer.
- AJAZ 4' x 6' Meter Test Trailer.
- EMP Light Trailer.

MISCELLANEOUS

- 1999 IMT 16,000-Lb. Material Handler, w/24' flatbed.
- UNDER DAWG Cable Puller, Kohler gas eng., trailer-mtd.
- SUN Engine Analyzer.
- BRANIC Air Tire Spreader.
- RTI R12 Air Conditioning Recycle Machine.
- SNAP-ON Tire Balancer.
- (4) (UNUSED) POWERTEK 3000CL Generators, 120/240V, AC 12V DC.
- (4) (UNUSED) POWERTEK 6500CL Generators, 120/240V, 13.5 hp.



INTERSTATE TD24 PINTLE-HITCH TRAILER

- (4) (UNUSED) POWERTEK 7500-E Electric Start Generators, w/16 hp. engine.
- (4) (UNUSED) UNITED POWER 7.4 kW Silent Gensets, w/dsl. eng.
- (4) (UNUSED) UNITED POWER 7.4 kW Gensets, w/dsl. eng.
- (2) (UNUSED) LONCIN MS10 Plate Compactors, w/6.5 hp. eng.
- (2) (UNUSED) LONCIN MS20 Plate Compactors, w/6.5 hp. eng.
- (3) (UNUSED) TUKCO TC180 6' Heavy-Duty Rototillers, w/3-pt. hitch, (fits 35-50 hp.).



UNDER DAWG CABLE PULLER

SURVEY EQUIPMENT

- (3) (UNUSED) 2008 GEOTOP GL-3 Self-Leveling Laser Levels, w/laser receiver, adjustable tripod, telescoping survey rod and 1-yr. warranty.
- (3) (UNUSED) 2008 GEOTOP 20X Automatic Levels, w/adjustable tripod. Telescoping Survey Rod, 1-year warranty.
- (2) (UNUSED) 2008 GEOTOP 20X Builder's Transit Levels, w/adjustable tripod, telescoping survey rod, 1-year warranty.

FOUCH EQUIPMENT AUCTION

After 55 years of serving the trucking, logging, and construction industries from one location, the owners of Fouch Equipment have decided to retire and have commissioned Garry Montague Auctioneers to manage a complete dispersal of more than \$1,000,000 worth of new, rebuilt, refurbished, and used parts inventory.

This Includes a Large Quantity of: Truck engines, transmissions, and gearhead assemblies such as Cummins, Caterpillar, Detroit, Eaton, and Rockwell.

Plus a Huge Inventory of : New and rebuilt transmission and rear differential gear sets, bearing, seal, and gasket sets, air valves, brake drums, oil pans, flywheel housings, brake cans, water pumps, steering repair kits, U-joints, and Cummins engine parts.

In Addition, There Will Be: Hundreds of lots of new and used general truck parts inventory, axles, fuel tanks, and truck accessories.

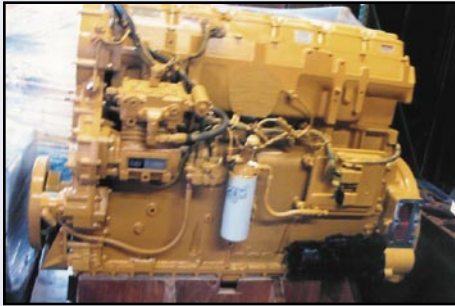
Rebuilt and Reconditioned Transmissions Include: 18-spd., 15-spd., 13-spd., 10-spd., and more.

Rebuilt and Reconditioned Engines Include: Caterpillar and Cummins.

Rebuilt and Reconditioned Rear Differentials Include: Eaton DS380, DS402, DS404, DT402, RS402, RS404, DS461P, DC461P, RC461, RS460, DS404, RS404, RS402, RC400; Rockwell RD20-145, RDL23-160, RR20-145, RDL20-145, RRL23-160, RR20-145, RRL20-145, SSHR, SQR100, SQD100.

FOUCH EQUIPMENT AUCTION

INSPECTION: Daily Beginning Saturday, March 22, 2008
8:00 A.M.–4:00 P.M.



(1 OF 2) REBUILT CAT 3406 ENGINES
(550 & 435 HP.)



1999 DYNAWELD 45' HYDRAULIC BEAVERTAIL EQUIPMENT TRAILER



(1 OF 3) SAFE CLEAN
CABINET PARTS WASHERS



1999 FORD F-450 FLATBED



CAT 8,000-LB. FORKLIFT



HYSTER 20,000-LB. FORKLIFT



LARGE HYDRAULIC SHOP PRESS



(2) OF A LARGE QUANTITY OF REBUILT
& RECONDITIONED GEAR HEADS



REBUILT CUMMINS BC-III, 400 HP.



QUINCY 50 HP. SCREW AIR
COMPRESSOR, w/AIR DRYER



PARTIAL VIEW OF RECONDITIONED
GEAR SETS



PARTIAL VIEW OF REBUILT AND
REFURBISHED TRANSMISSIONS



PARTIAL VIEW OF NEW PARTS
INVENTORY

We Will Also Auction the Entire Shop Equipment Inventory, Including: Air compressors, impact wrenches, tools, steel workbenches, engine, transmission, and gearhead stands, chop saws, hyd. shop press, (3) large cabinet safe clean parts washers, lathe, drill presses, grinders, Matco A/C machine (used once), Parker hyd. hose machine, pullers, seal drivers, socket sets, floor and bottle jacks, hoses, special engine tools, and a large quantity of parts shelving.

Plus: All office furniture, computers, office machines, desks, chairs, shredders, file cabinets, and office supplies.

**This Auction Culminates 55 Years of History and Will Likely Contain More Than 1,000 Lots.
DO NOT MISS THIS ONE-OF-A-KIND OPPORTUNITY!**

GM **GARRY MONTAGUE**
Auctioneers

P.O. Box 11437
Spokane Valley, WA 99211-1437
See our Website at gmauctioneers.com

Presorted
First Class Mail
U.S. Postage
PAID
Eugene, Oregon
Permit No. 305



**UNRESERVED
PUBLIC AUCTION**

GM AUCTION

Fouch Equipment, Inc.
Longview, Washington
Tuesday, March 25
& Wednesday,
March 26, 2008
9:00 A.M. Each Day

GM AUCTION

**UNRESERVED
PUBLIC AUCTION**

Retirement Auction for Fouch Equipment, Inc.
(After 55 Years in One Location)

PLUS

Our Annual Spring Truck & Heavy Equipment Sale

**Longview,
Washington**
Fouch Equipment, Inc.
758 California Way

**Tuesday, March 25
& Wednesday, March 26, 2008
9:00 A.M. Each Day**

INSPECTION: Daily Beginning Saturday,
March 22, 2008 • 8:00 A.M.–4:00 P.M.



FOUCH EQUIPMENT, INC. (FRONT VIEW)